

44/135

135

# PLAT OF FRENCHMAN'S CREEK

PLANNED UNIT DEVELOPMENT  
PLAT No. 6

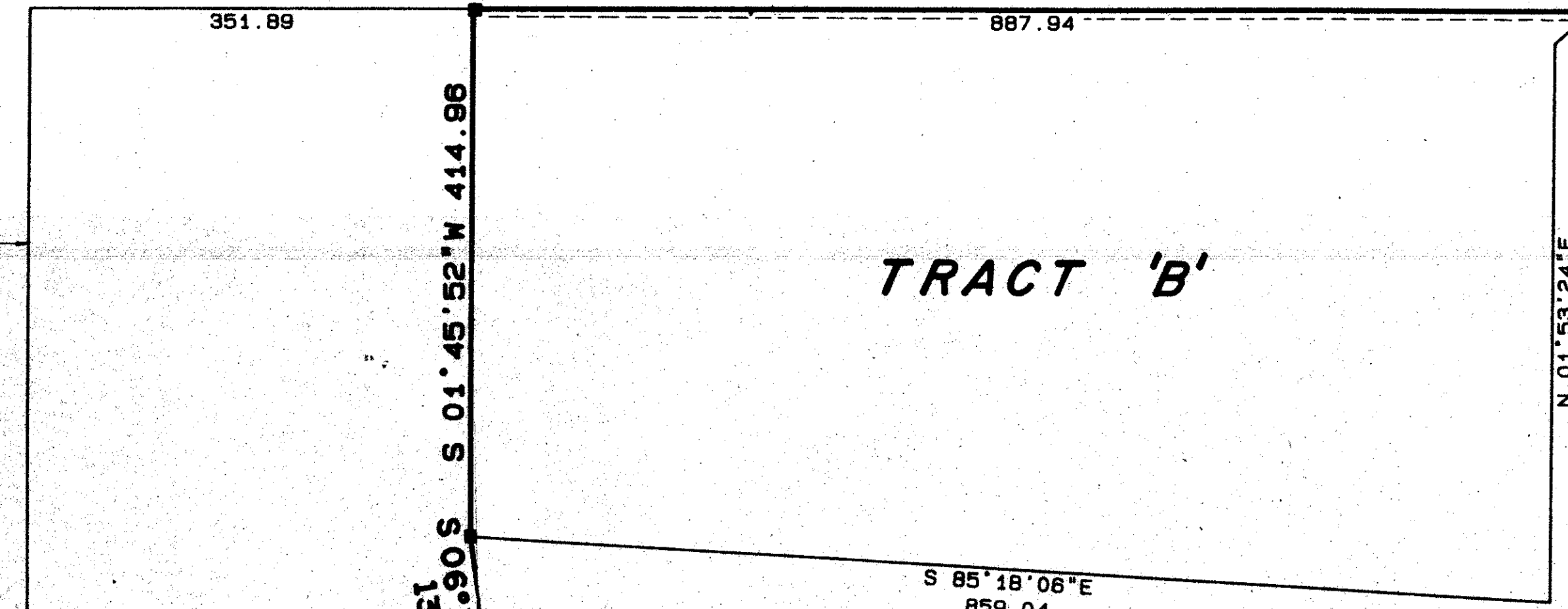
NORTHWEST CORNER  
SECTION 30, TWP.  
41 So., RGE. 43 E.

N. 1/4 CORNER 30/41/43

DONALD ROSS ROAD  
N 88°31'01"W 2102.28

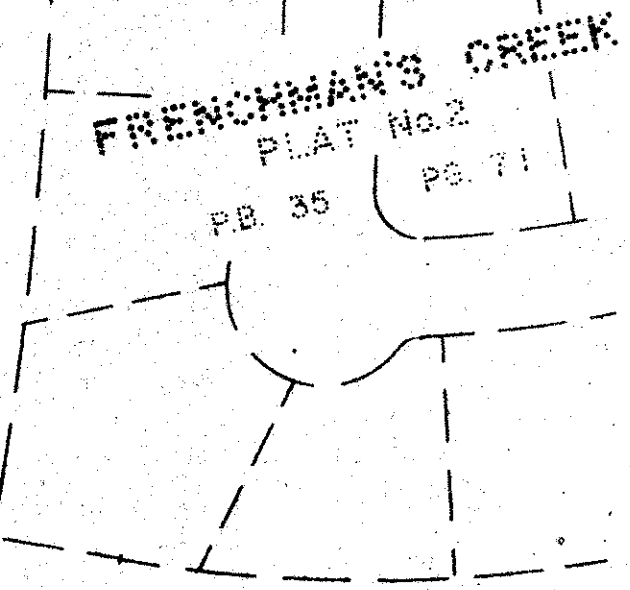
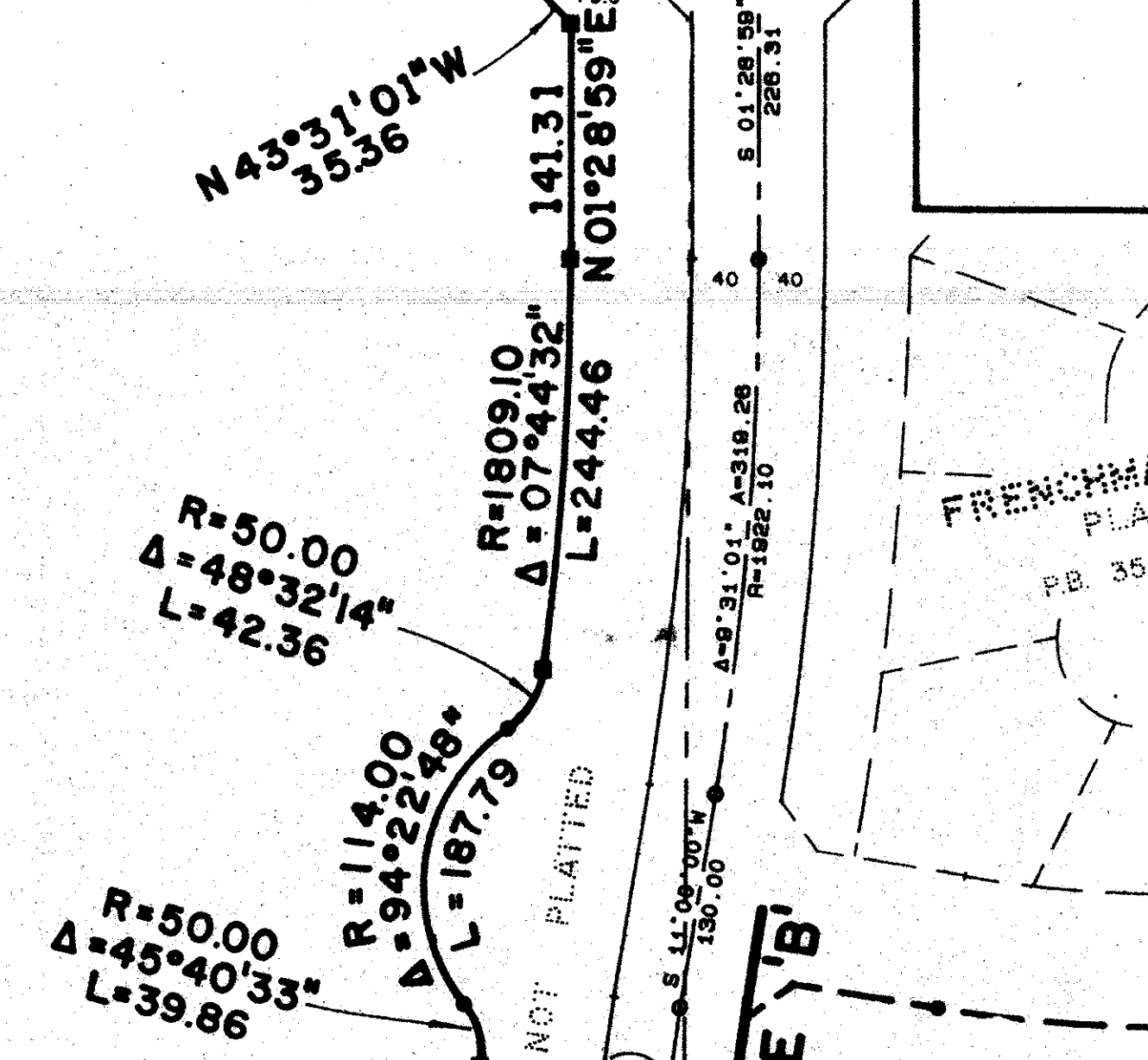
N. LINE NW 1/4 SECT. 30/41/43

P.O.B.  
PARCEL No. 1



TRACT 'B'

TRACT 'A'  
(TO BE REPLATTED)



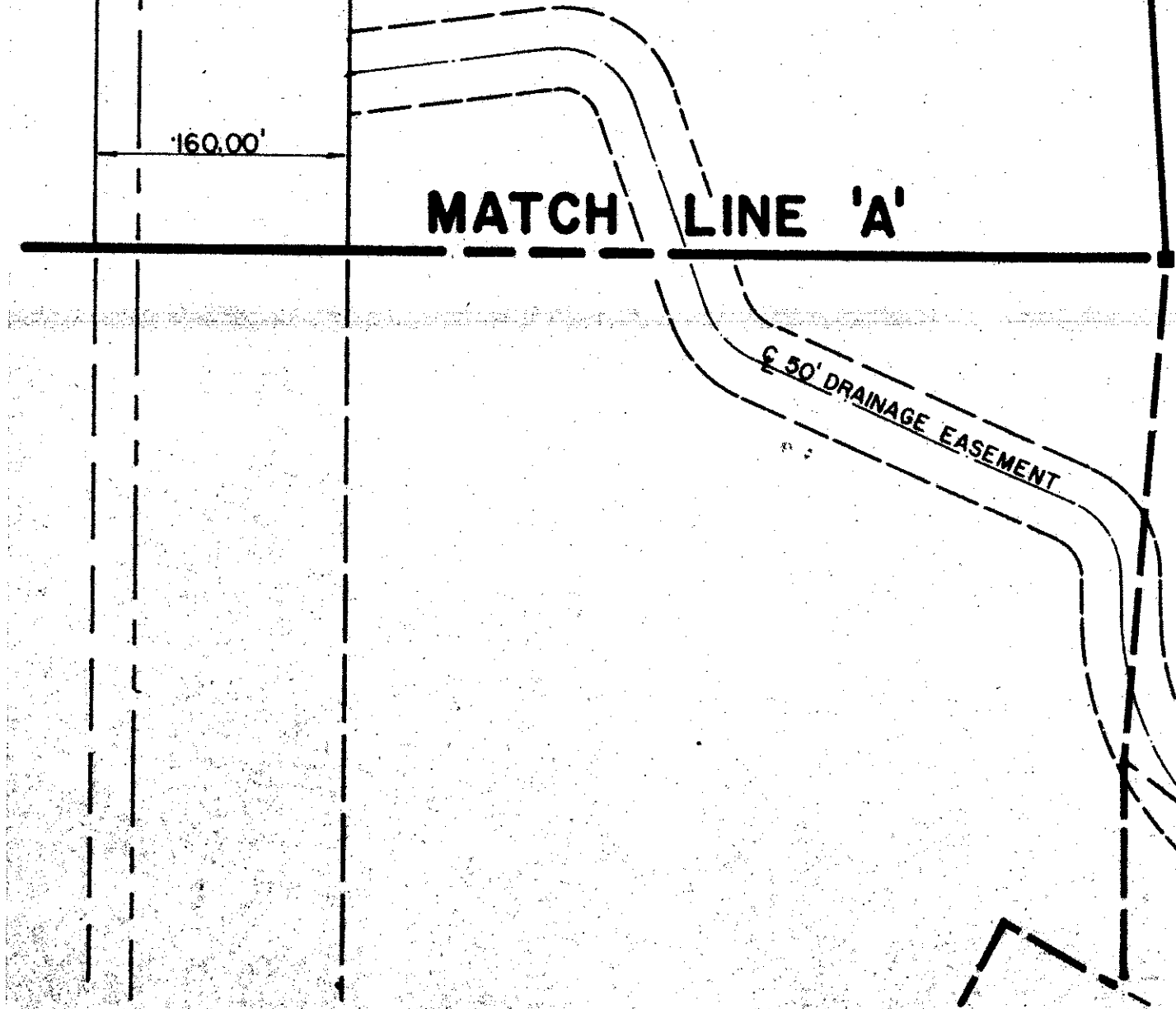
W. RIGHT-OF-WAY LINE S.R. ALT. A-1-A  
W. LINE SECT. 30/41/43 N 07°51'12"E  
S.R. ALT. A-1-A  
ULTIMATE EAST R/W S.R. ALT. A-1-A (PER O.R.B. 3665, PG. 228) N 01°45'53"E

NOT PLATTED

TOURNAMENT DRIVE (SEE NOTES)  
MATCH LINE 'B'

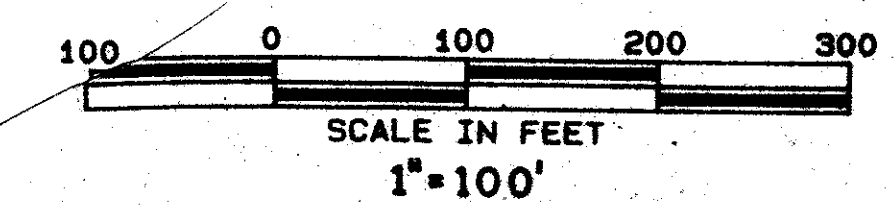
SHEET 5

North



- NOTES:
- = DENOTES PERMANENT REFERENCE MONUMENT
  - L.A.E. = DENOTES LIMITED ACCESS EASEMENT
  - BEARINGS SHOWN HEREON ARE RELATIVE TO THE PLAT OF FRENCHMAN'S CREEK, PLAT NO. 1, AS RECORDED IN PLAT BOOK 30, PAGES 241, 242, AND 243, PUBLIC RECORDS OF PALM BEACH COUNTY, FLORIDA.
  - THE RIGHT-OF-WAY OF TOURNAMENT DRIVE AS SHOWN HEREON IS PER THE PLAT OF FRENCHMAN'S CREEK, A P.U.D., PLAT NO. 1, AS RECORDED IN PLAT BOOK 30, PAGES 241, 242, AND 243, PUBLIC RECORDS OF PALM BEACH COUNTY, FLORIDA.
  - THERE SHALL BE NO BUILDINGS OR STRUCTURES PLACED ON PUBLIC UTILITY EASEMENTS.
  - THERE SHALL BE NO BUILDINGS OR THE PLANTING OF TREES OR SHRUBS ON DRAINAGE EASEMENTS.

SEE SHEET 4



0248-004  
30-41-43  
44/135

FRENCHMAN'S CREEK  
PLAT No. 6

WILLIAM E. WALLACE, INC. CONSULTING ENGINEERS, LAND PLANNERS & SURVEYORS 331 NORTHLAKE BLVD., NO. PALM BEACH, FL. 33408 • 305/942-0231 3241 SW MAPLE RD., PALM CITY PLAZA, PALM CITY, FL. 33480 • 305/263-0300			
FIELD:	JOB NO. 82-0296	F.B.	PG.
OFFICE: W.D.J.	DATE: APRIL 1982	DWG NO. 82-0296	
CKD:	REF:	SHEET 3	OF 5